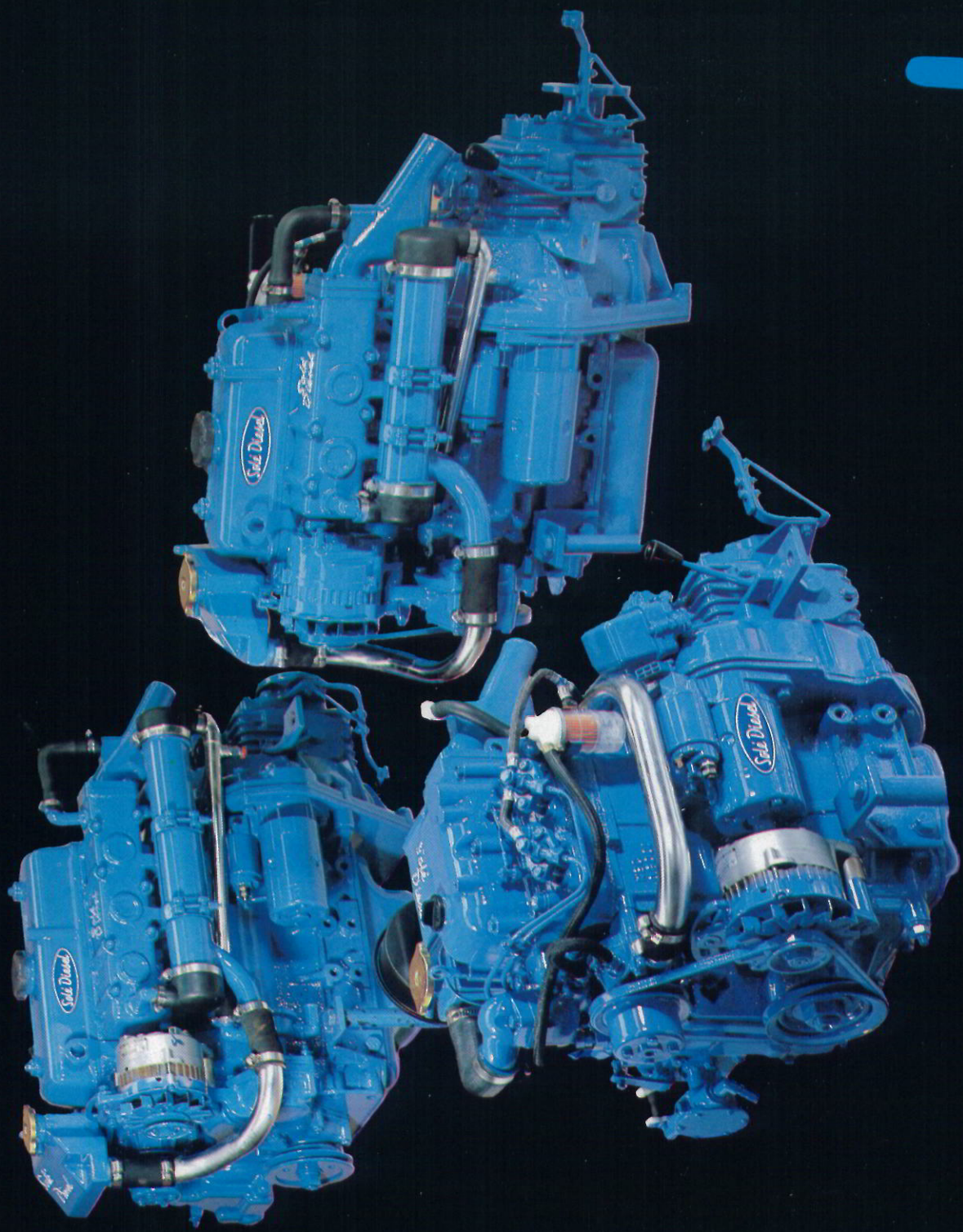


MARINE
DIESEL
ENGINES



Sale Diesel

THIS EXCITING NEW RANGE OF SOLÉ MARINE DIESELS

provide quiet, lightweight, compactness which will delight those seeking performance and reliability. Thanks to their efficient design and construction, clean exhaust emission and smooth running features, very little servicing is needed and maintenance costs are therefore minimal. These robust multi-cylinder, low profile engines are designed to fit yachts, motor boats and fishing launches from 16ft (5 mtrs) to 50ft (15 mtrs) approx.

All Solé Mini diesels are fitted with a combined heat exchanger, header tank and water cooled exhaust manifold **AS STANDARD** — isolating the raw seawater in components which are designed to withstand its corrosive effect, thus the cast iron cylinder block and head are protected from corrosion and silt settlement in the thermostatically controlled fresh water circuit, ensuring the engine operates at its designed temperature.

ENGINE SPECIFICATION

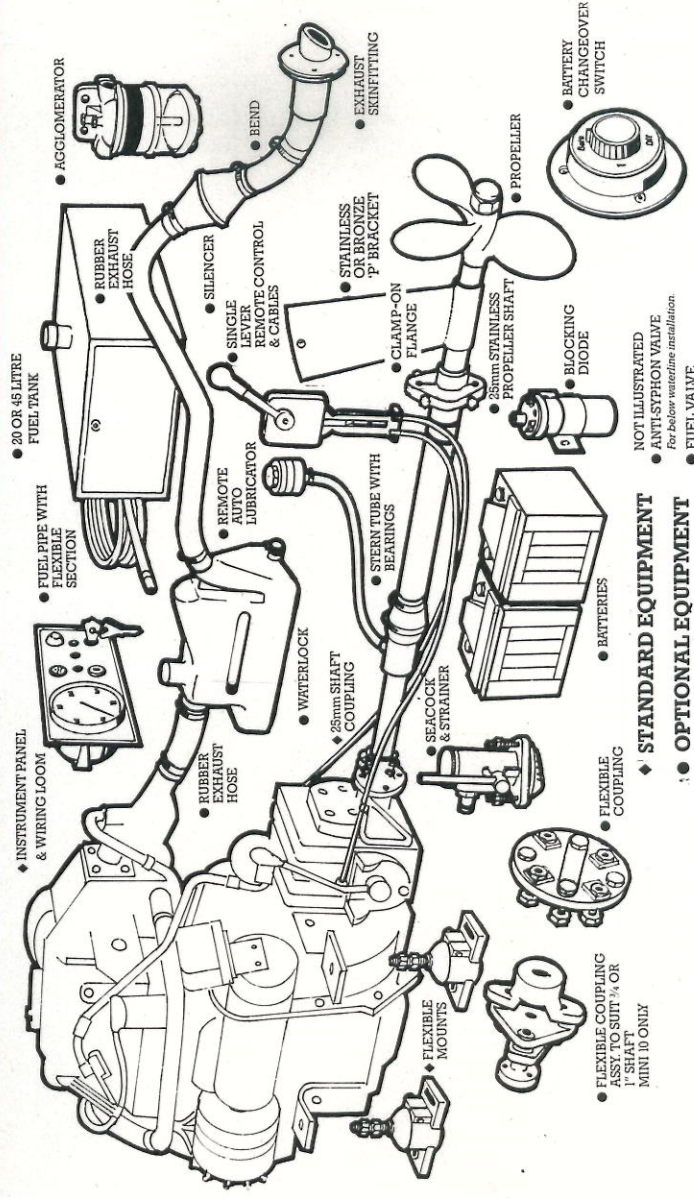
Vertical watercooled four stroke overhead valve multi-cylinder compression ignition engines with special swirl type combustion chamber system. Cast iron cylinder head & crankcase with integral flywheel bellhousing and detachable sump. Thermostatically controlled cooling with heat exchanger system and water cooled exhaust manifold circulated by a self priming flexible vane pump. Fuel injection is by Bosch M type pump. Rotary oil pump pressure feed lubrication system is through a disposable can filter. An oil

TECHNICAL DATA

ENGINE TYPE	
NUMBER OF CYLINDERS	
BORE	mm (ins.)
STROKE	mm (ins.)
CYCLE	
CUBIC CAPACITY	cc (cu. ins.)
COMPRESSION RATIO	
OUTPUT (DIN 6270B) 3000 RPM	HP (kW)
FUEL CONSUMPTION @ 2200 RPM	Pints/hr Litres/hr
LUBRICATING OIL CAPACITY	ENGINE litres GEARBOX litres
COOLING SYSTEM	
INJECTION PUMP	
GEARBOX CONSTANT MESH	
MECHANICAL TYPE RATIO	
PROPELLER SHAFT ROTATION	
ELECTRICAL SYSTEM 12 VOLT	STARTER kW ALTERNATOR amps
INSTALLATION ANGLE	Max
ENGINE/GEARBOX	Dry Weight kg lbs

The above data is subject to change without notice

evacuation sump pump is fitted for ease of oil changes. Starting is by 12v. electric motor with alternator for battery charging. Heater plugs for cold starting are fitted together with a remote stop control. The engine mounted air cleaner has a replaceable element. The fuel filter is a disposable type. A mechanical fuel lift pump is fitted. The gearbox is a 2:1 reduction, constant mesh mechanical type with forward, neutral, and reverse gears, with connections to accept single lever remote control cables.



◆ **STANDARD EQUIPMENT**
◆ **OPTIONAL EQUIPMENT**

NOT ILLUSTRATED
◆ ANTI-SYPHON VALVE
For below waterline installation
◆ FUEL VALVE

MINI 10	MINI 14	MINI 23	MINI 34
2	2	3	4
65 (2.56")	70 (2.76")	73 (2.87")	73 (2.87")
68 (2.68")	78 (3.07")	78 (3.07")	78 (3.07")
4 STROKE			
451 (27.52")	600 (36.61")	979 (59.74")	1305 (79.63")
23.1	23.1	23.1	23.1
9 (6.62)	13 (9.5)	20 (14.92)	31 (22.81)
2.5	4	6.75	7.5
1.49	2.3	3.8	4.2
1.81	2.51	3.51	4.51
0.41	0.41	0.41	0.41

FRESH WATER WITH HEAT EXCHANGER

BOSCH M

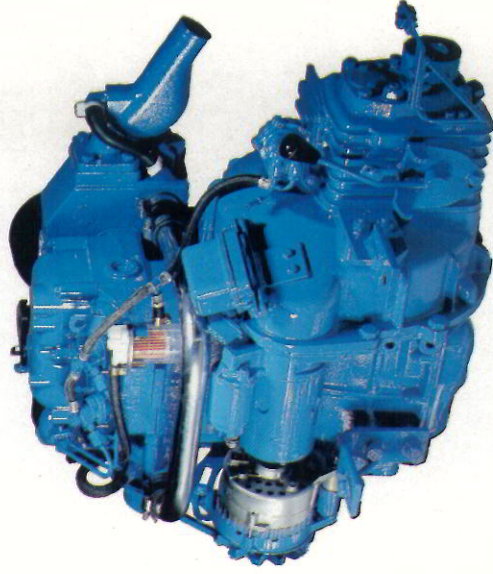
1.9L:1	1.9L:1	2:1	2:1
CLOCKWISE VIEWED FROM STERN			
0.9	1.1	1.6	2
35	35	35	50
20°	20°	20°	20°
90	105	155	177
198	231	341	390

INSTALLATION EQUIPMENT

Fitting a marine engine will vary according to hull configurations. The illustration below indicates the typical requirements for a new installation. Not all of the items illustrated may be required where a vessel is to be re-engined as it may be possible to utilise part of the existing equipment if compatible. It is essential to adopt the correct practices if a good installation is to be achieved. Advice on any particular aspect of installation can be given by our technical department.

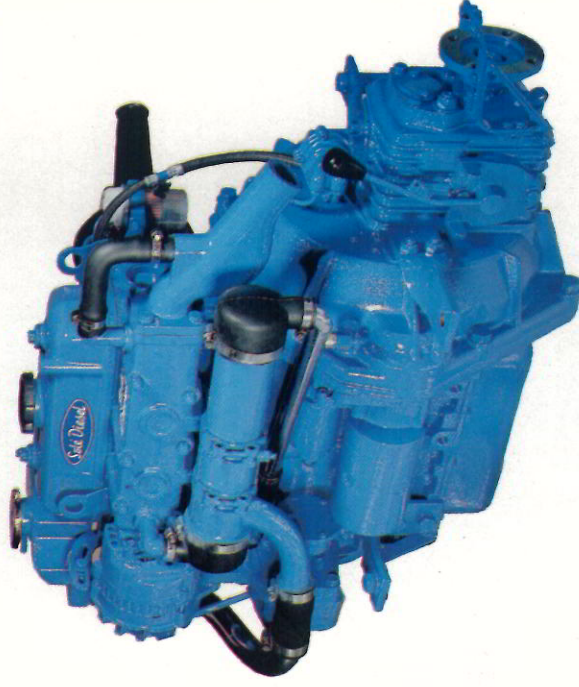
◆ STANDARD EQUIPMENT SUPPLIED WITH ENGINE

- 1 set (4) Flexible Mounts.
- 1 25mm. shaft coupling.
- 1 Sump pump (fitted)
- 1 set Remote control cable connections (fitted)
- 1 Switch panel fitted with:—
 - a. Tachometer
 - b. Key switch
 - c. Audible warning
 - d. Push button stop
 - e. Warning lamp — Charge
 - f. Warning lamp — Temperature
 - g. Warning lamp — Oil pressure
 - h. Wiring harness (2 mtr.)
- 1 Operators Manual
- 1 Tool Kit
- 1 Warranty Certificate

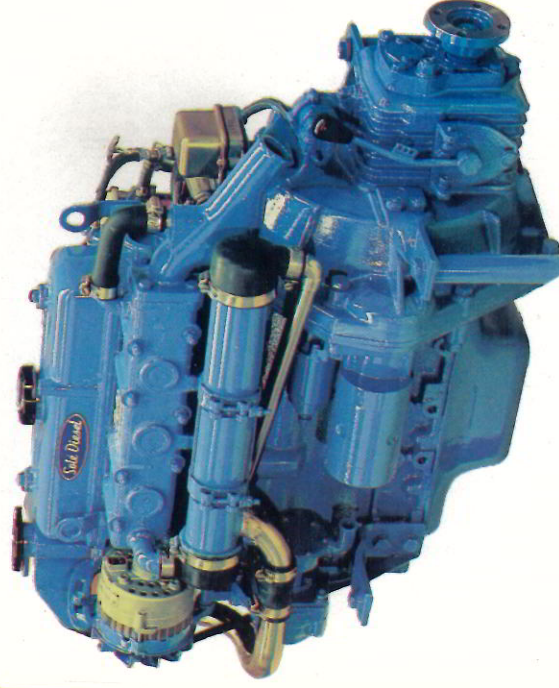


MINI-10

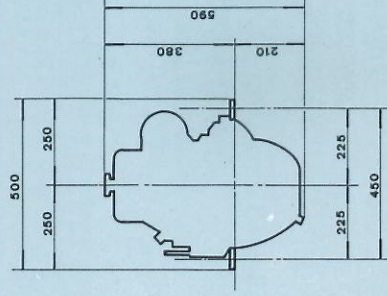
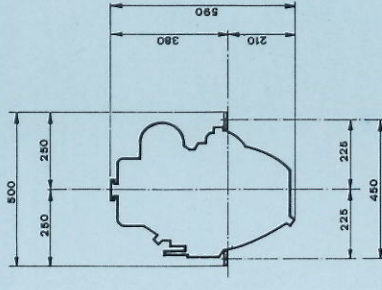
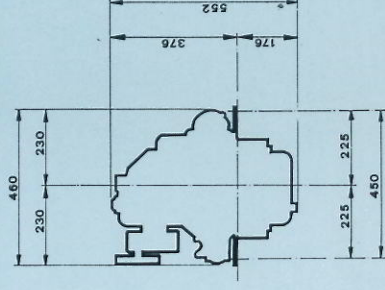
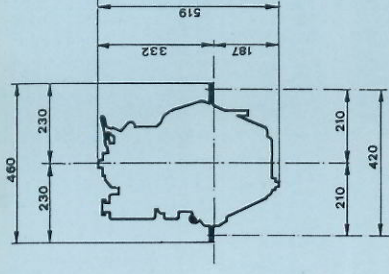
MINI-14



MINI-23



MINI-34



Bath Place Wharf, Downs Road, Maldon, Essex

Prices and specifications are subject to amendment without notice and all information is given subject to the Company's current conditions of tender and sale.